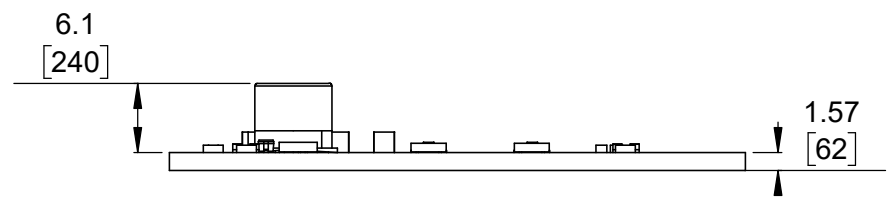


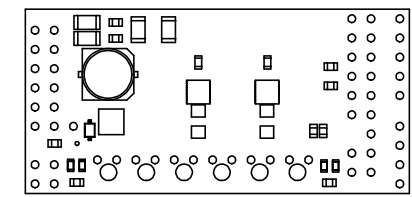
3 Isometric view
Scale 3:2

1 Board dimensions (top view)
Scale 3:2

2 Connector callouts (bottom view)
Scale 3:2



4 Profile
Scale 3:2



5 Actual size
Scale 1:1

1. Grid lines indicate 2.54 mm [100 mil] spacing.
2. To get the specified scale, select 100% in print settings.
3. Drill location tolerance: ± 0.1 [± 5].
4. Board edge tolerance: ± 0.3 [± 10].

https://www.pololu.com/product/2519	
Name: Dual MAX14870 Motor Driver Shield for Arduino	Item number: 2519
Drawing date: 30 March 2018	Dev code: ash07a
Units: mm [mil]	Material: mixed

