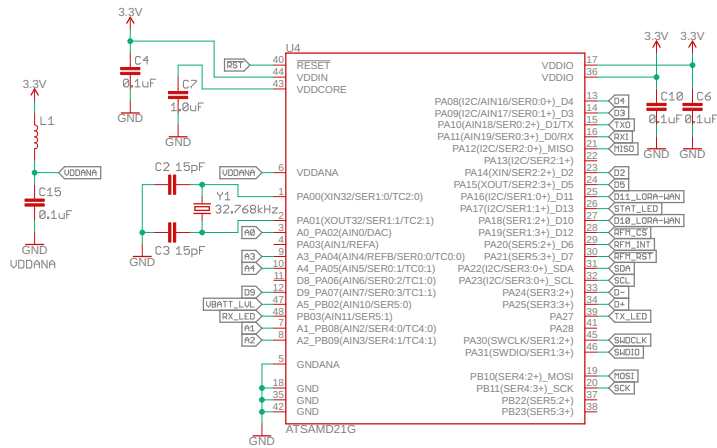
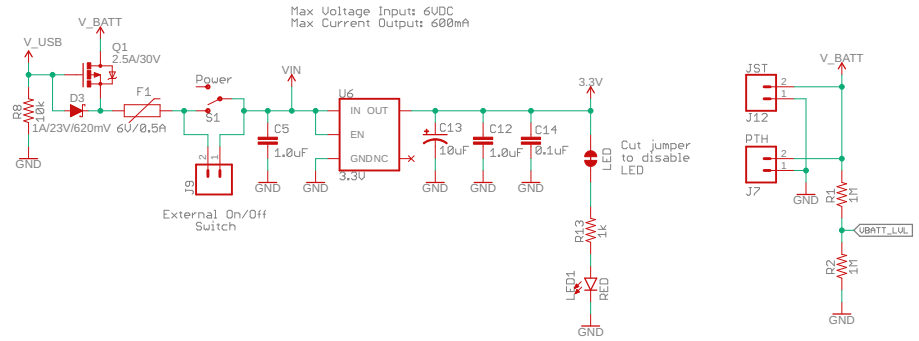


SAMD21G



UCC RANGE: 1.62-3.63V

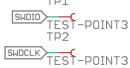
POWER



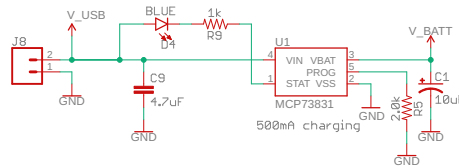
RESET



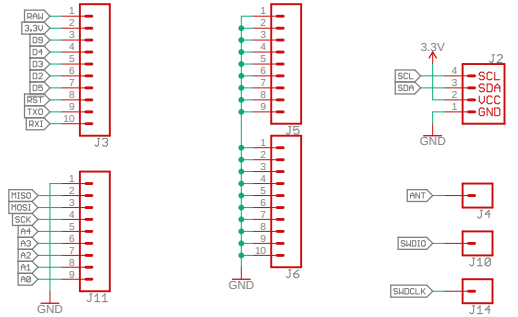
TEST POINTS



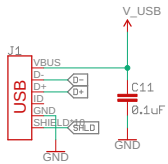
LIPO CHARGER



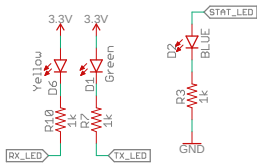
HEADERS/QWIC



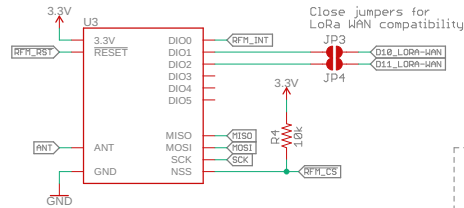
USB



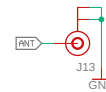
RX/TX and STAT LEDs



RFM95W



Antenna



Released under the Creative Commons Attribution Share-Alike 4.0 License  
<https://creativecommons.org/licenses/by-sa/4.0/>

TITLE: SAMD21\_Pro\_RF ∞ ⊞

Design by: Elias Santistevan REV: v11

Revised by: Pete Lewis

Date: 1/28/2020 11:45 AM Sheet: 1/1