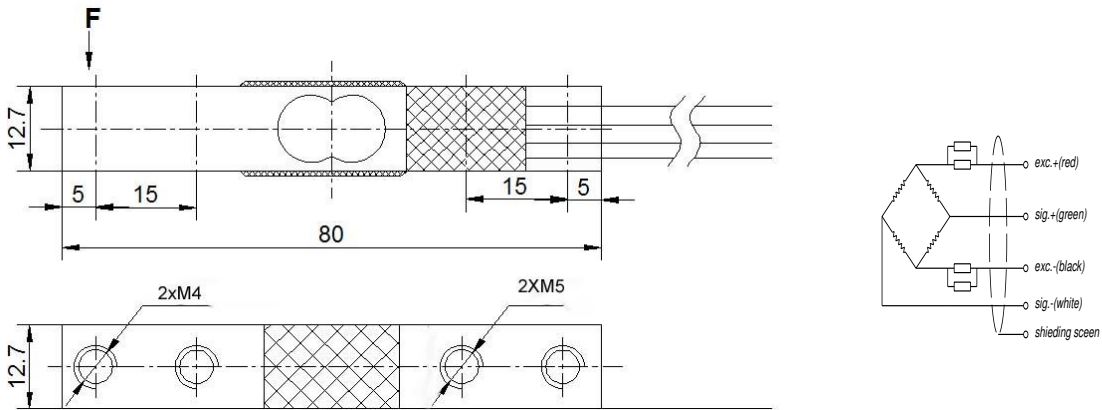




**Features:**

- ◆ Capacity : 3~200kg
- ◆ Material: aluminum-alloy or alloy steel
- ◆ Type: Parallel beam type
- ◆ Defend grade: IP65
- ◆ Application : Palm scale, kitchen scale, electronic balance, fishing scale, electronic platform scale and other electronic weighing devices.

**Electrical connection and Dimensions:(dimension unit: mm)**



**Specifications:**

| capacity                        | kg       | 3,5,10,20,25,30,50(aluminum);<br>80,100,120,200(alloy steel)  |
|---------------------------------|----------|---|
| safe overload                   | %FS      | 120   |
| ultimate overload               | %FS      | 150   |
| rated output                    | mV/V     | 1.0 ± 0.15  |
| excitation voltage              | Vdc      | 5 ~ 10  |
| combined error                  | %FS      | ± 0.05  |
| zero unbalance                  | %FS      | ± 0.1   |
| non-linearity                   | %FS      | ± 0.05  |
| hysteresis                      | %FS      | ± 0.05  |
| repeatability                   | %FS      | ± 0.03  |
| creep                           | %FS/3min | ± 0.05  |
| input resistance                | Ω        | 1000 ± 15   |
| output resistance               | Ω        | 1000 ± 10   |
| insulation resistance           | M Ω      | ≥ 2000  |
| operating temperature range     | °C       | -10 ~ +55   |
| compensated temperature range   | °C       | -10 ~ +40   |
| temperature coefficient of SPAN | %FS/10°C | ± 0.05  |
| temperature coefficient of ZERO | %FS/10°C | ± 0.05  |
| Electrical connection           | cable    | 4 color wire (standard)or 4 shielded PVC cable, Ø0.8 × 220 mm |

※Ordering code: model-capacity- rated output-accuracy-defend grade- the length of cable