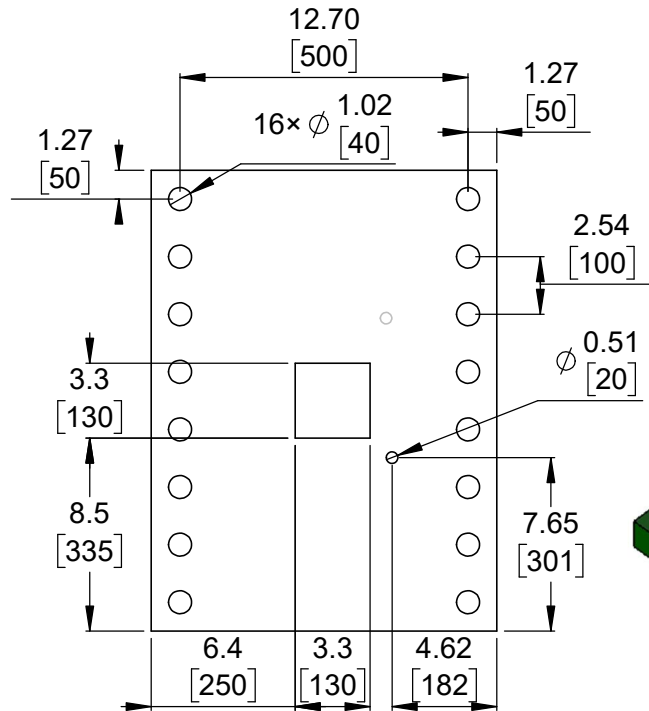
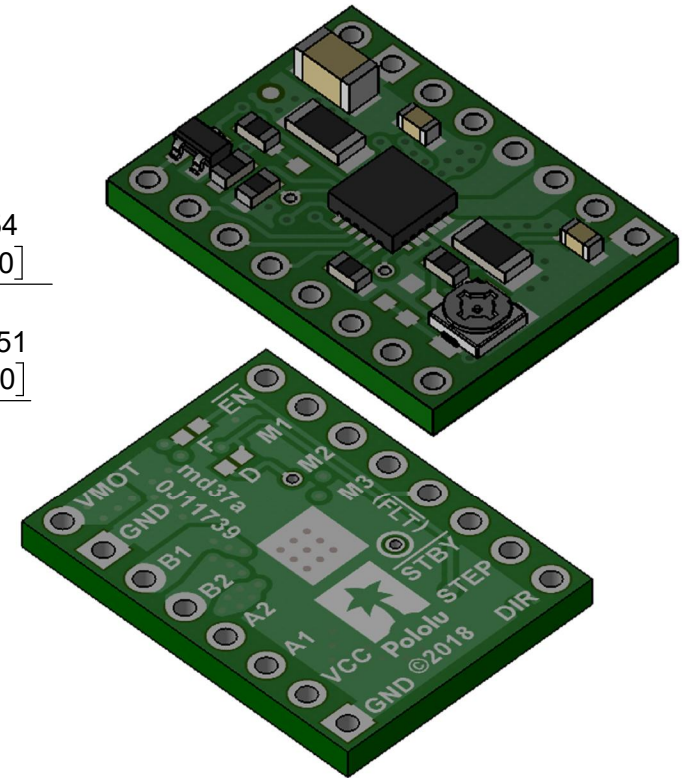


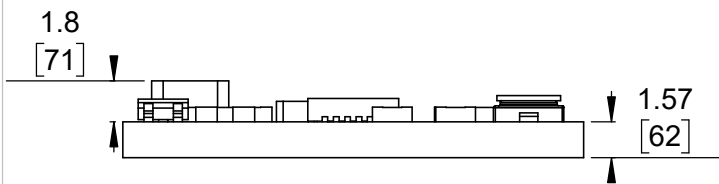
① Board dimensions (top view)
Scale 3:1



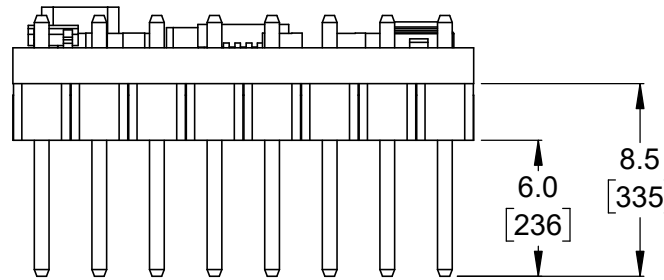
② Connector callouts (bottom view)
Scale 3:1



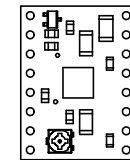
③ Isometric view
Scale 3:1



④ Profile
Scale 3:1




⑤ Profile with headers
Scale 3:1



⑥ Actual size
Scale 1:1

- To get the specified scale, select 100% in print settings.
- Drill location tolerance: ± 0.1 [± 5].
- Board edge tolerance: ± 0.3 [± 10].

<https://www.pololu.com/product/2878>

Name: STSPIN820 Stepper Motor Driver Carrier		Item number: 2878, 2879
Drawing date: 16 November 2018	Dev code: md37a	 Pololu Robotics & Electronics © 2018 Pololu Corporation
Units: mm [mil]	Material: mixed	