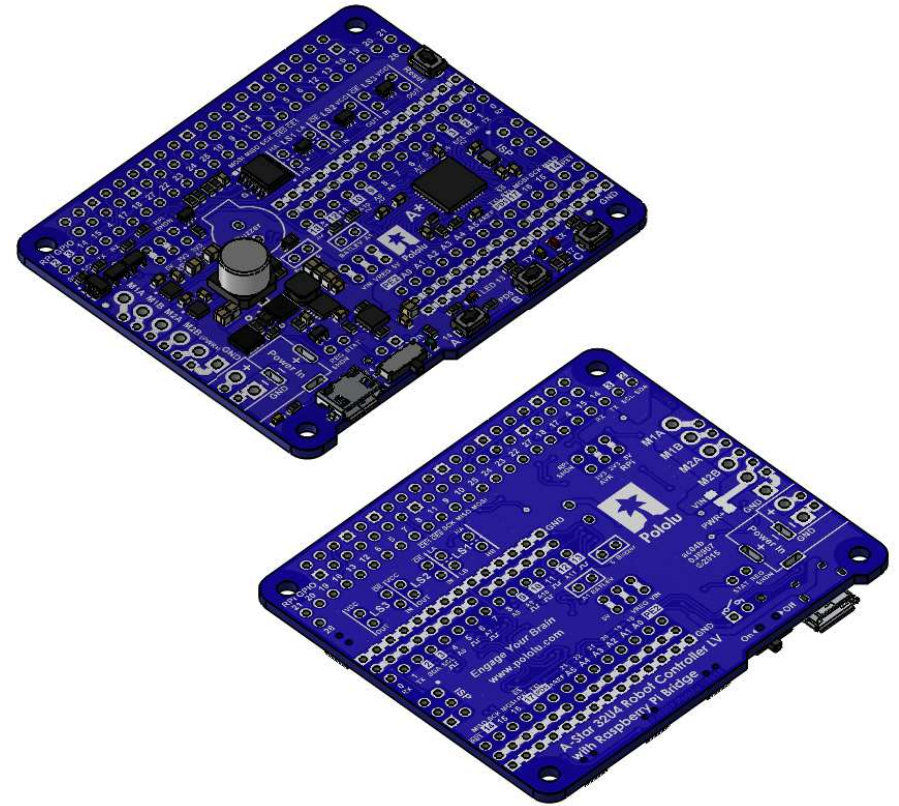
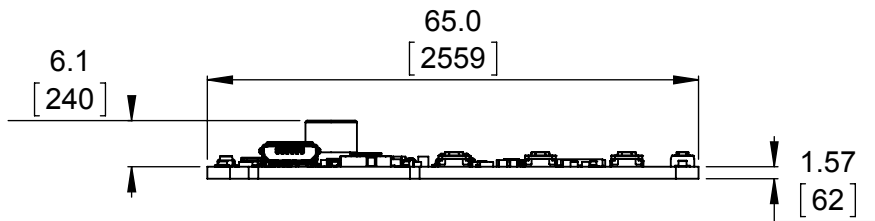


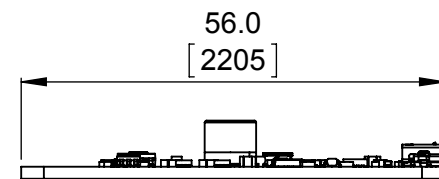
① Top view (actual size)  
Scale 1:1



② Isometric view  
Scale 1:1



③ Long profile  
Scale 1:1



④ Short profile  
Scale 1:1

1. To get the specified scale, select 100% in print settings.
2. Drill location tolerance:  $\pm 0.1$  [ $\pm 5$ ].
3. Board edge tolerance:  $\pm 0.3$  [ $\pm 10$ ].

<https://www.pololu.com/product/3116>

Name:  
A-Star 32U4 Robot Controller LV with  
Raspberry Pi Bridge (SMT components only)

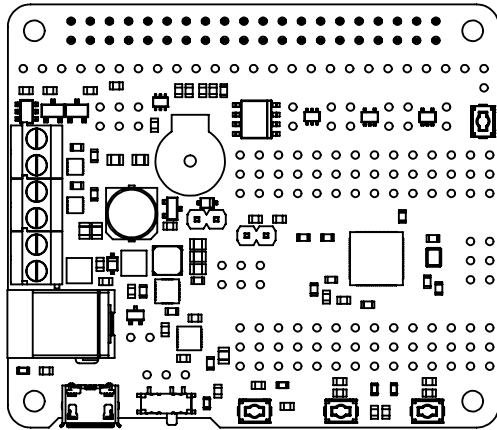
Item number:  
3116

Drawing date:  
3 March 2016

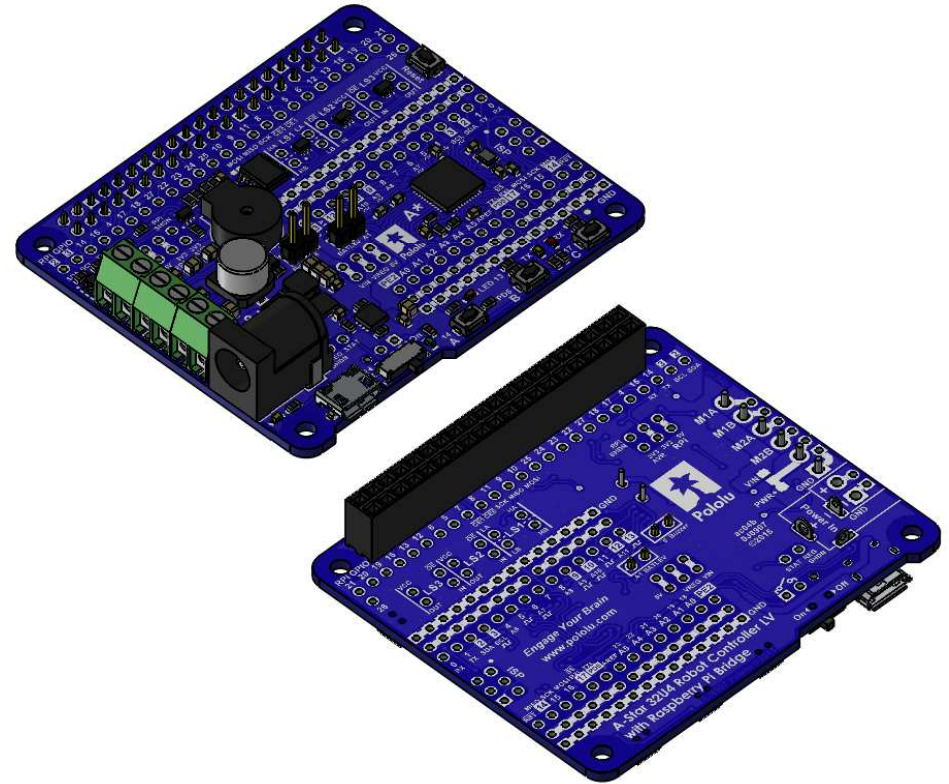
Units: mm  
[mil]

PCB dev code:  
ac04b

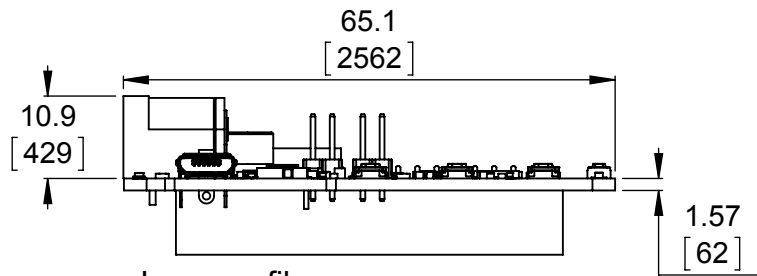
  
© 2016 Pololu Corporation



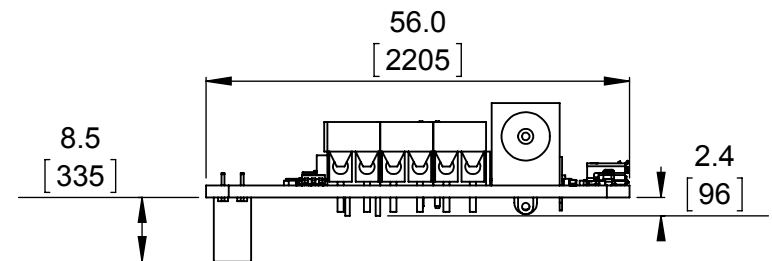
1 Top view (actual size)  
Scale 1:1



2 Isometric view  
Scale 1:1



3 Long profile  
Scale 1:1



4 Short profile  
Scale 1:1

1. To get the specified scale, select 100% in print settings.
2. Drill location tolerance:  $\pm 0.1$  [ $\pm 5$ ].
3. Board edge tolerance:  $\pm 0.3$  [ $\pm 10$ ].

<https://www.pololu.com/product/3117>

Name:  
A-Star 32U4 Robot Controller LV with  
Raspberry Pi Bridge (assembled)

Item number:  
3117

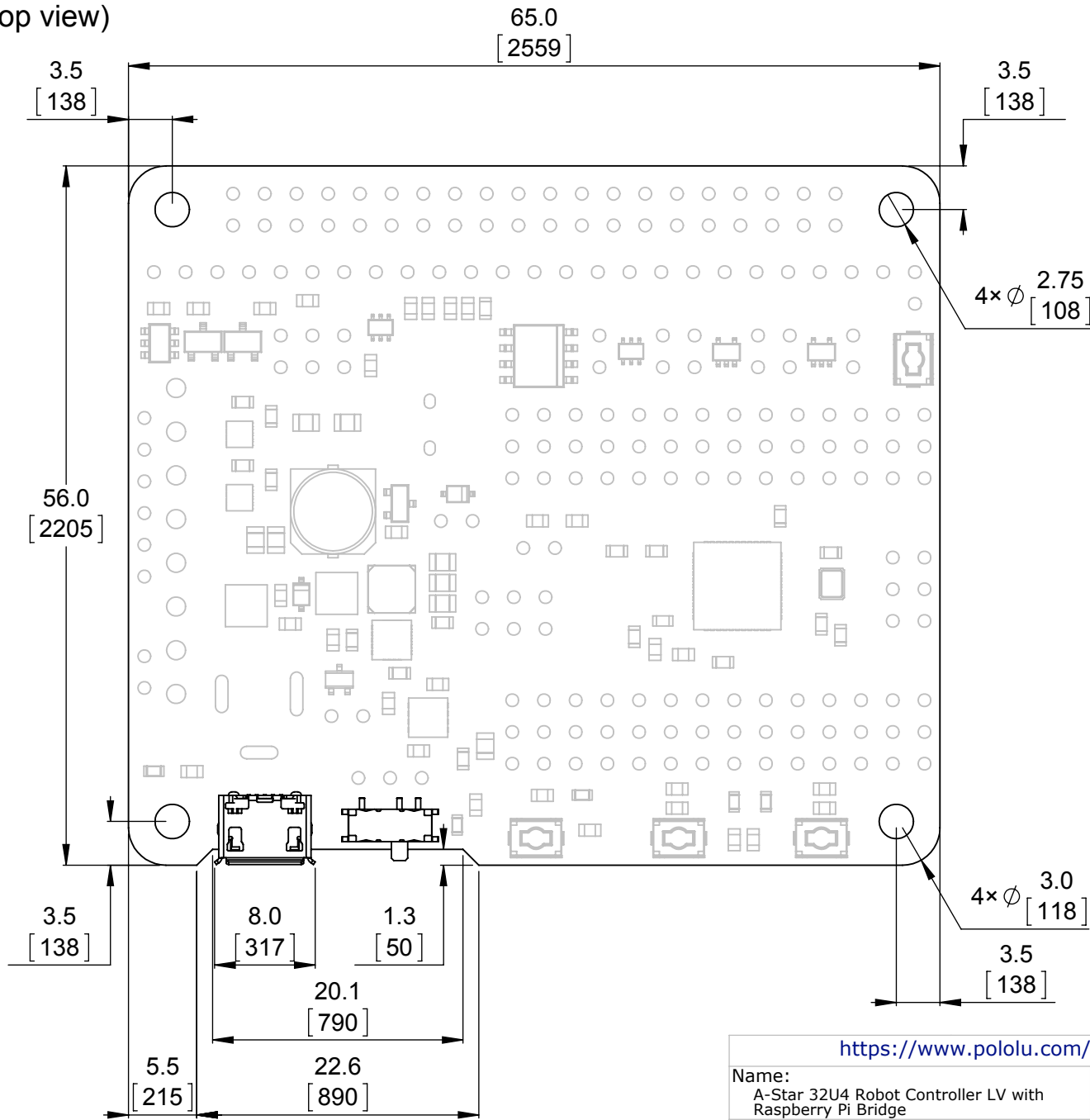
Drawing date:  
3 March 2016

Units: mm  
[mil]

PCB dev code:  
ac04b

  
© 2016 Pololu Corporation

# Board dimensions (top view)



1. To get the specified scale, select 100% in print settings.
2. Drill location tolerance:  $\pm 0.1$  [ $\pm 5$ ].
3. Board edge tolerance:  $\pm 0.3$  [ $\pm 10$ ].

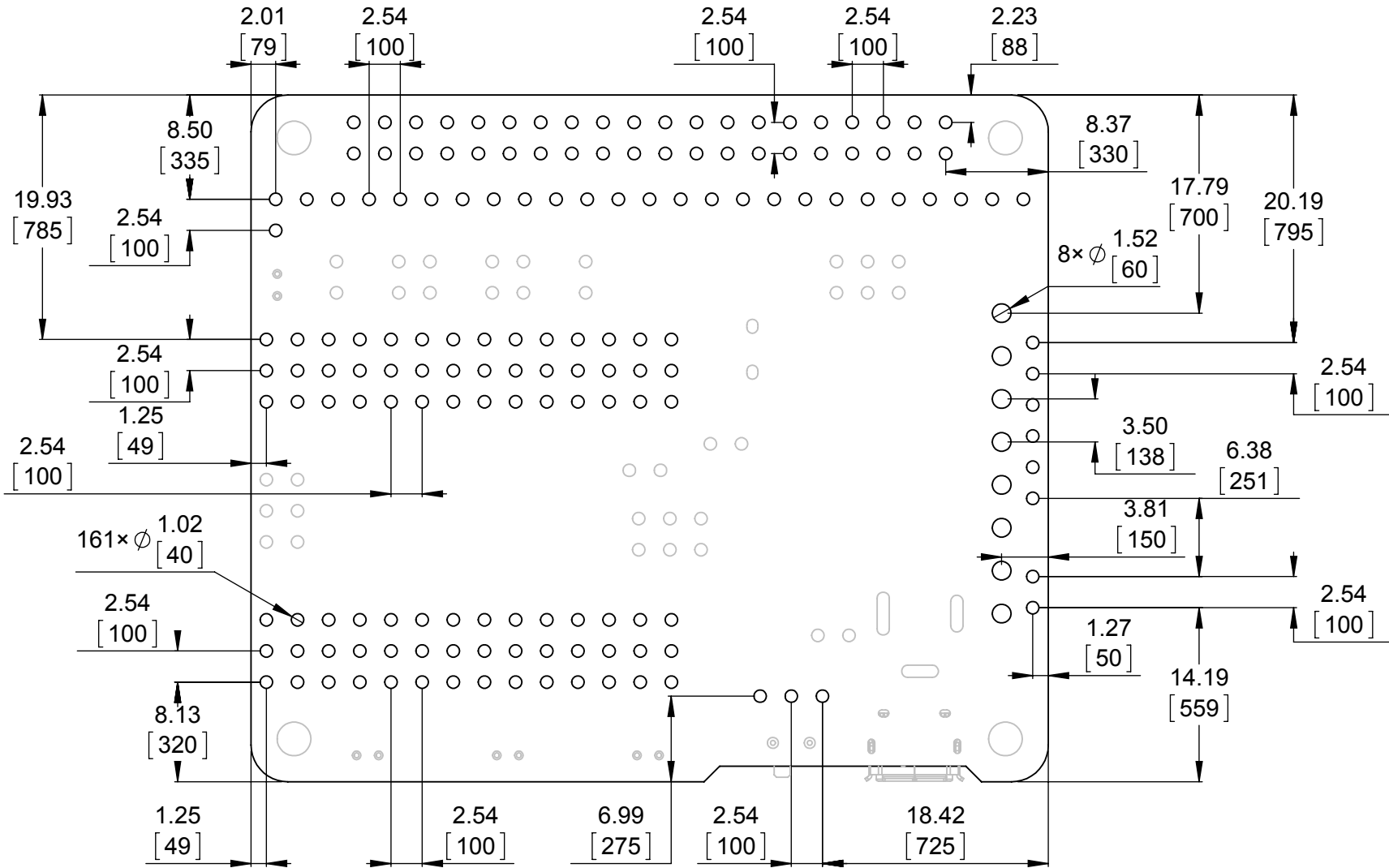
Scale: 2:1

<https://www.pololu.com/product/3116>

Name: A-Star 32U4 Robot Controller LV with Raspberry Pi Bridge		Item number: <b>3116, 3117</b>
Drawing date: <b>3 March 2016</b>		
Units: mm [mil]	PCB dev code: <b>ac04b</b>	




# Connector callouts 1 (bottom view)



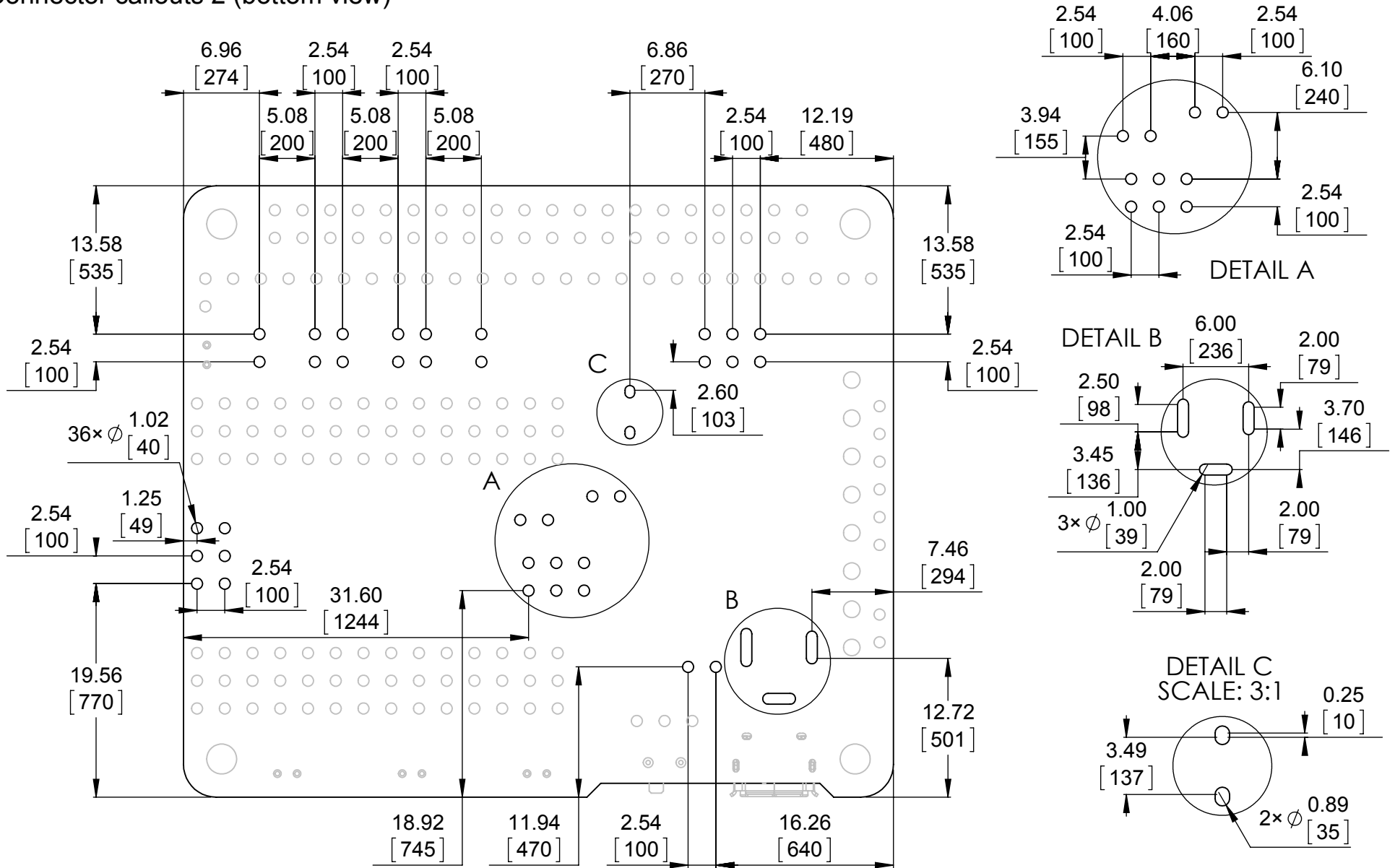
- To get the specified scale, select 100% in print settings.
- Drill location tolerance:  $\pm 0.1$  [ $\pm 5$ ].
- Board edge tolerance:  $\pm 0.3$  [ $\pm 10$ ].

Scale: 2:1

<https://www.pololu.com/product/3116>

Name: A-Star 32U4 Robot Controller LV with Raspberry Pi Bridge		Item numbers: <b>3116, 3117</b>
Drawing date: <b>3 March 2016</b>		 <p>© 2016 Pololu Corporation</p>
Units: mm [mil]	PCB dev code: <b>ac04b</b>	

# Connector callouts 2 (bottom view)



1. To get the specified scale, select 100% in print settings.
2. Drill location tolerance:  $\pm 0.1$  [ $\pm 5$ ].
3. Board edge tolerance:  $\pm 0.3$  [ $\pm 10$ ].

Scale: 2:1

<https://www.pololu.com/product/3116>

Name:  
A-Star 32U4 Robot Controller LV with  
Raspberry Pi Bridge

Item numbers:  
**3116, 3117**

Drawing date:  
**3 March 2016**

Units: mm  
[mil]

PCB dev code:  
**ac04b**

**Pololu**  
Robotics & Electronics  
© 2016 Pololu Corporation