

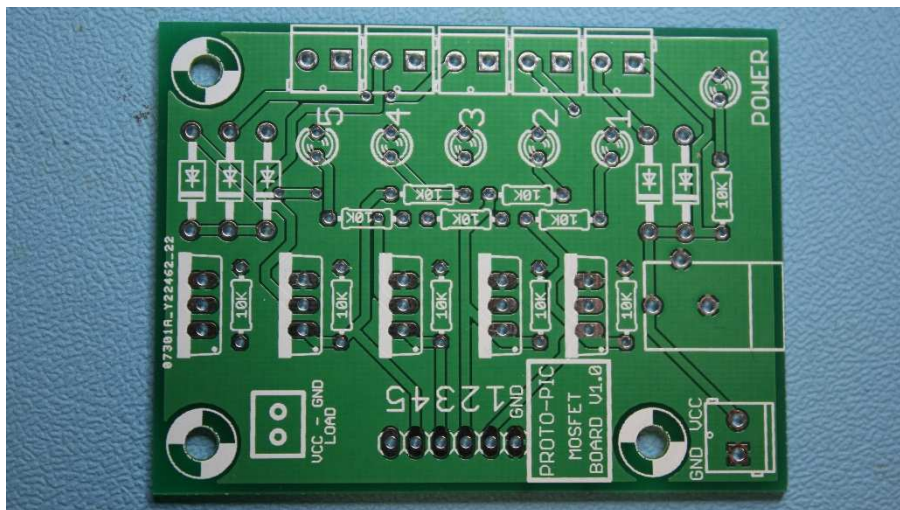


## 5 Channel MOSFET Control Board

Assembly instructions for PPMOSFET5 board.

First check the contents of the kit:

- 1 x PCB
- 5 x RFP30N06LE MOSFETs
- 5 x Diodes
- 11 x Resistors
- 1 x 6 Pin Header
- 1 x Power Jack
- 3 x 4 way screw connectors
- 6 x LEDs

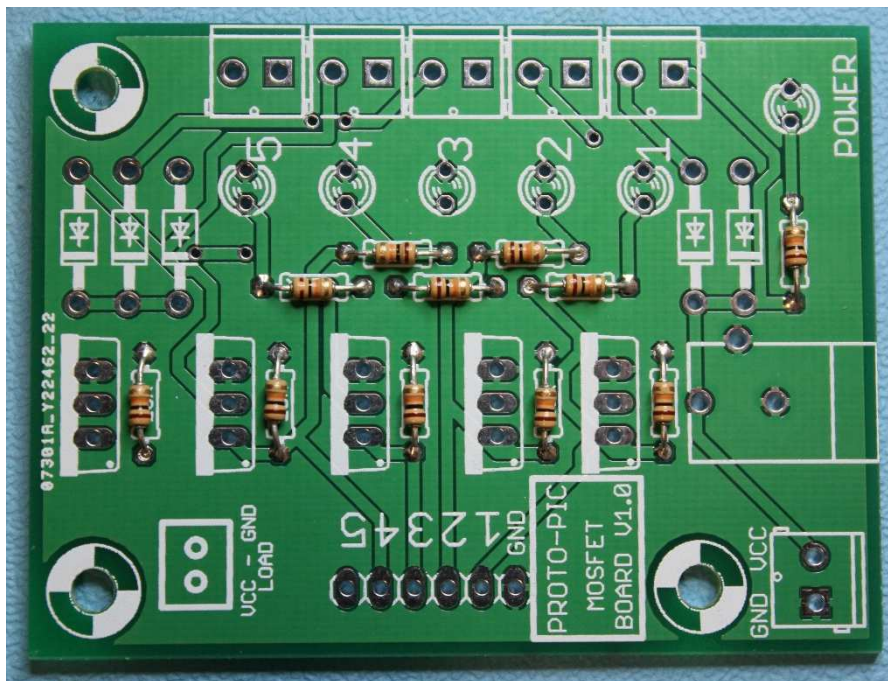


This is the PCB

(Yours may be a different colour)

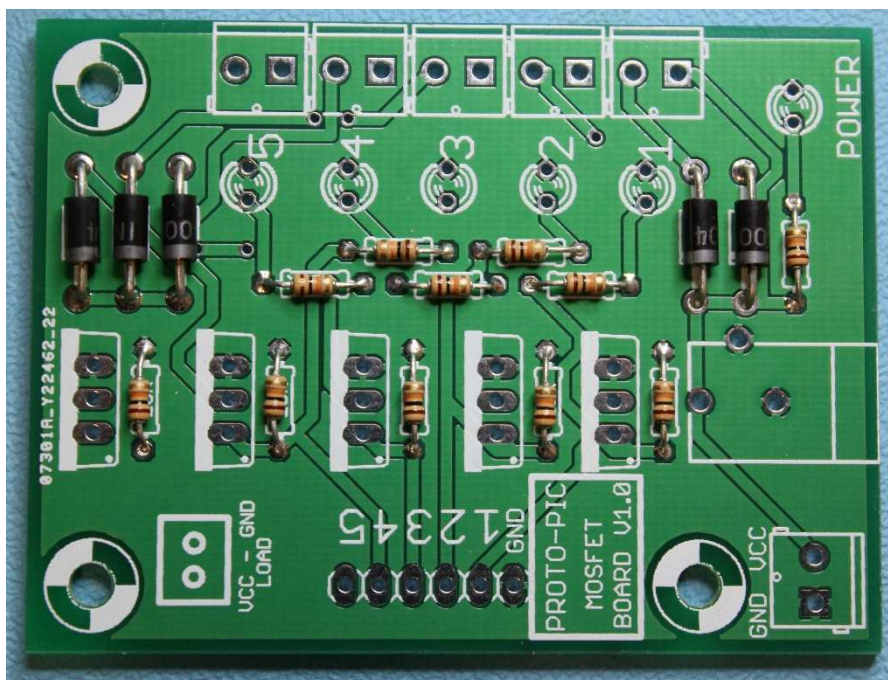
The assembly of this kit is straight forward, and even beginners should have no problems assembling it. We will start with the lowest profile components and work up to the taller.

First, mount the resistors:



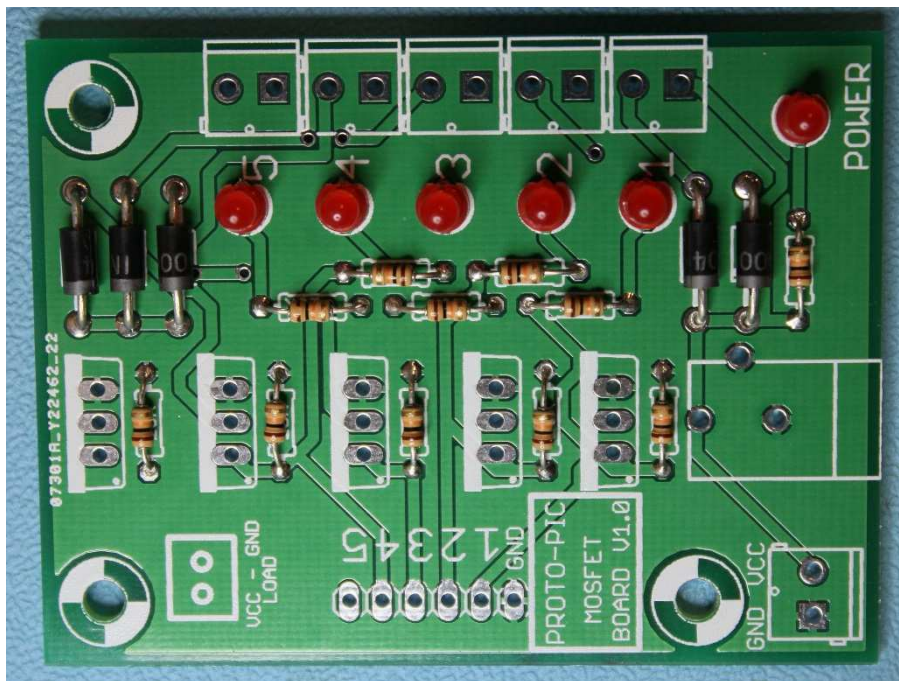
The resistors can be mounted any way around.

Next to be mounted are the diodes:



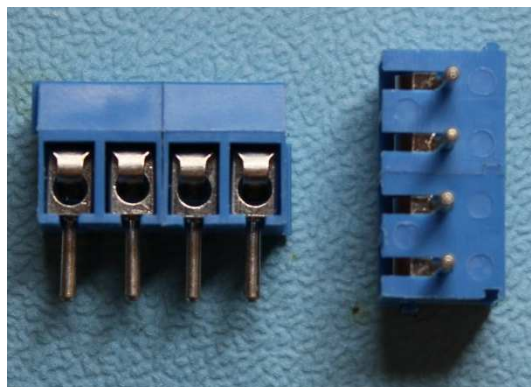
These need to be mounted with the strip toward the centre of the board (as shown above)

Next mount the LEDs:

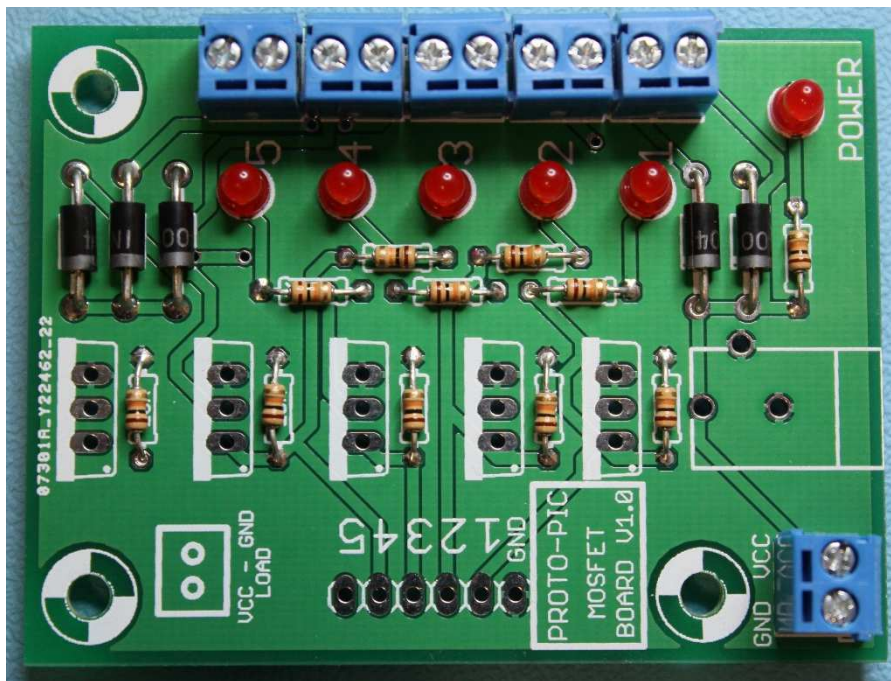


If you look at the legs of the LEDs, there is a longer leg – this is the Anode (+ve) & should be mounted towards the centre of the board.

Next separate the 3 sets of connectors:

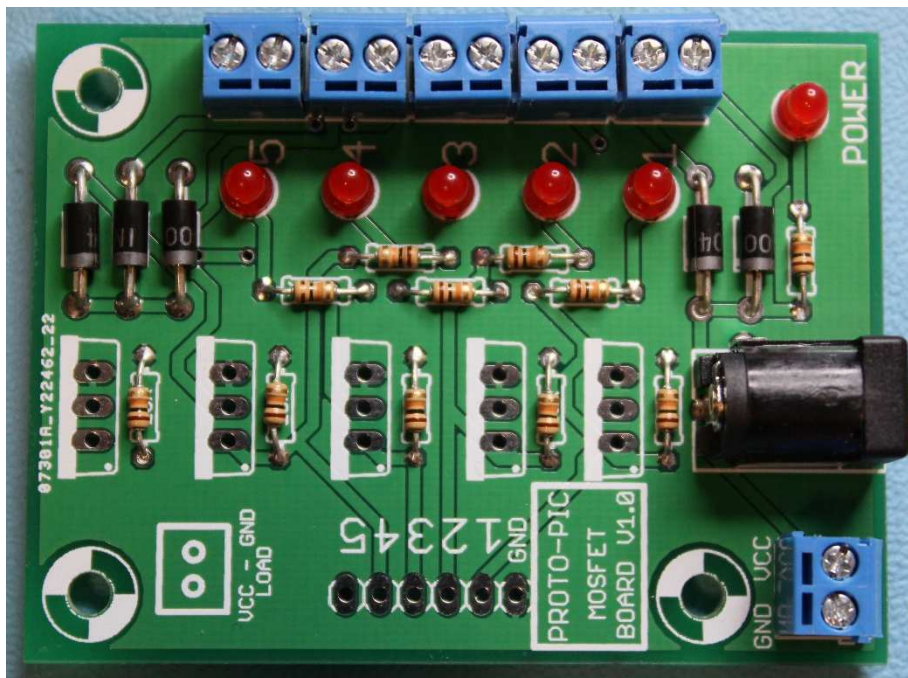


And mount them like this:

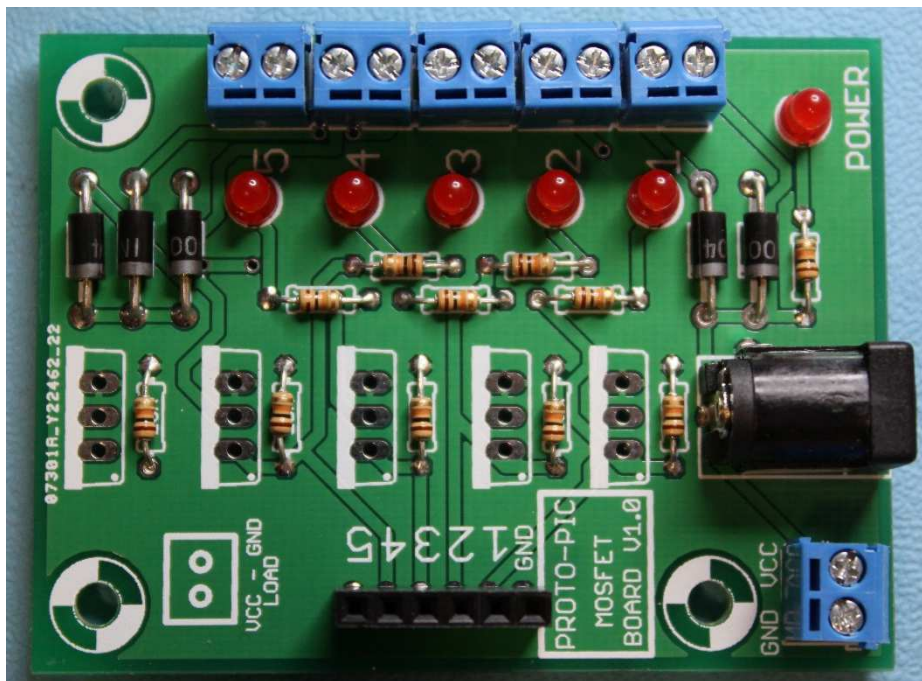


Make sure the access holes are towards the outside of the board.

Next to mount is the Barrel Jack (if required):

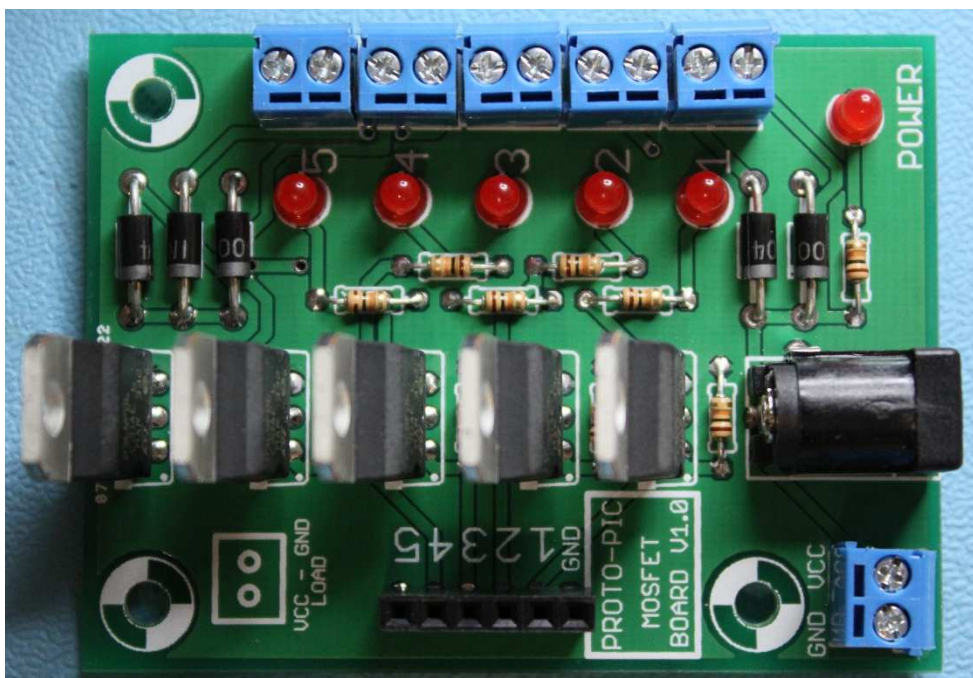


Mount the female pin header (if required):



There will be long pins on the bottom of the board – These can be used for mounting to a board or can be cut off.

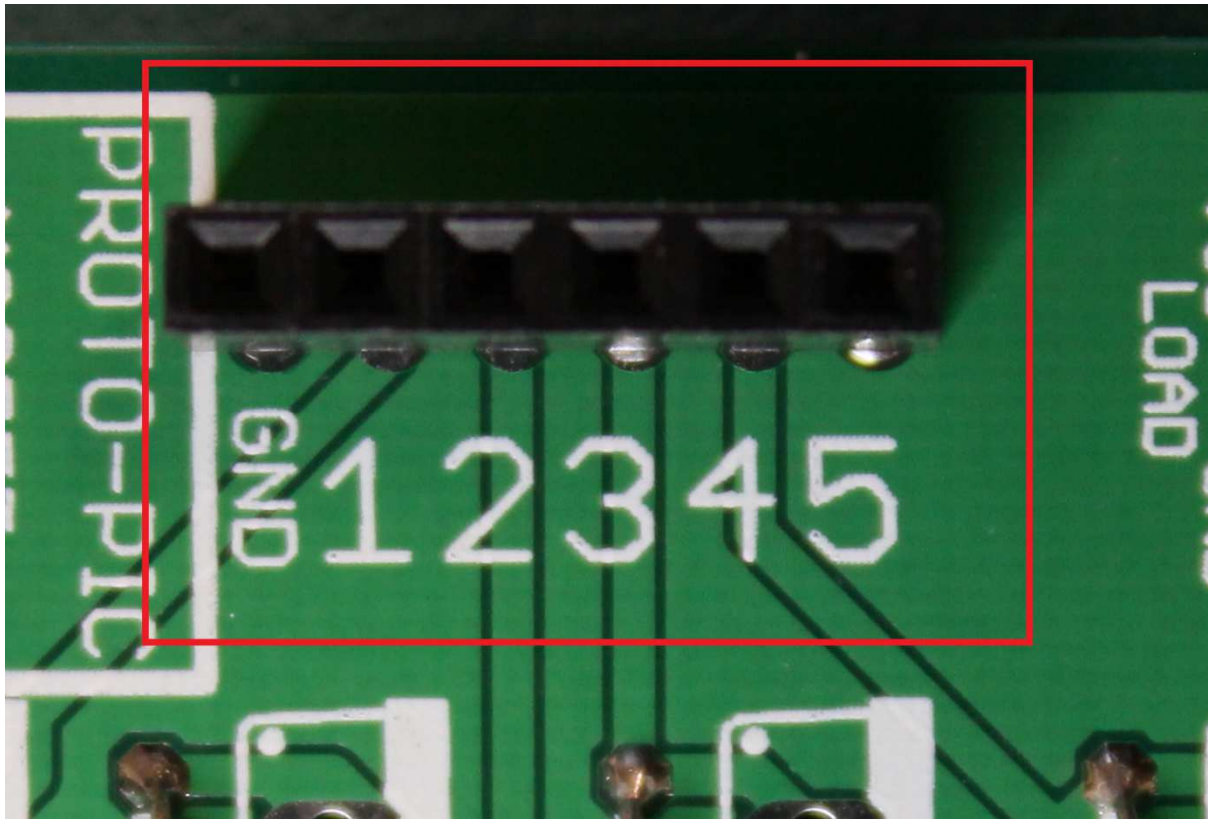
Finally mount the MOSFETs to the board:



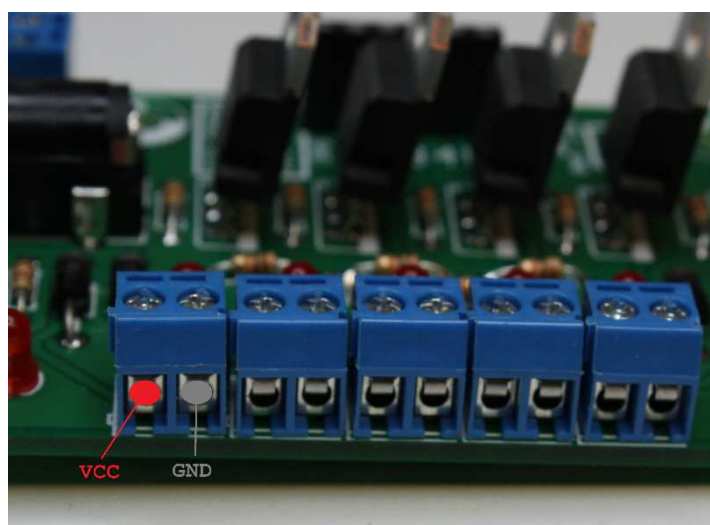
Match the MOSFETs to the silkscreen on the PCB (like above).

## Operating Instructions

Connect your power supply to the barrel jack (Centre positive) OR to the connector to the left of the barrel jack, with Ground to the left and VCC to the right connectors.



Connect your control input to the pins 1-5, and ground from the control input to GND on this connector.



For each load, the left pin is VCC and the right pin is GND.