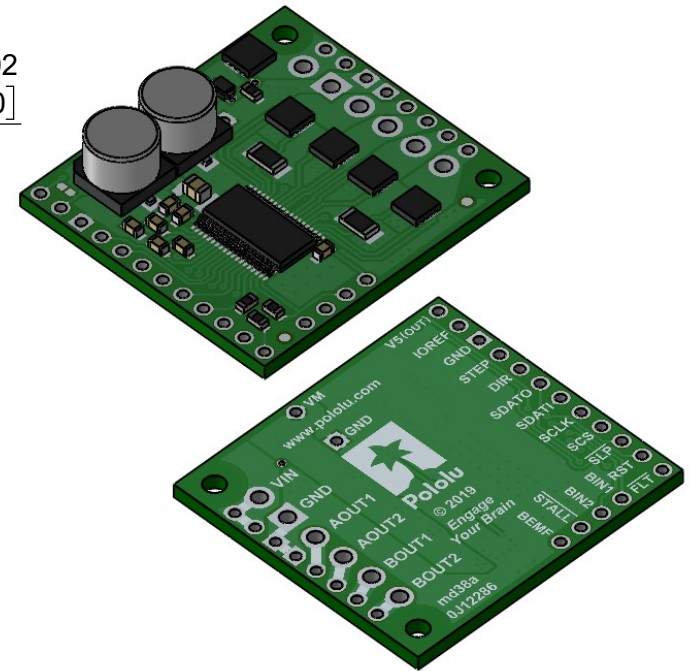
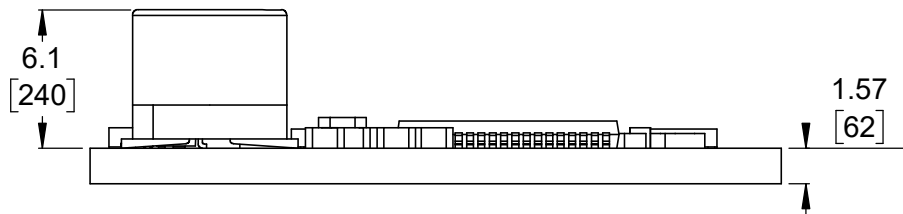


1 Board dimensions (top view)  
Scale 3:2

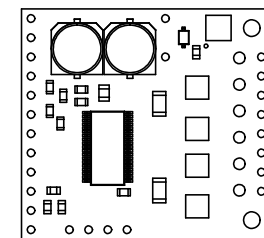
2 Connector callouts (bottom view)  
Scale 3:2



3 Isometric view  
Scale 3:2




4 Profile  
Scale 3:1



5 Actual size  
Scale 1:1

- 1. Intended for #2 and M2 screws.
- 2. To get the specified scale, select 100% in print settings.
- 3. Drill location tolerance:  $\pm 0.1$  [ $\pm 5$ ].
- 4. Board edge tolerance:  $\pm 0.3$  [ $\pm 10$ ].

<https://www.pololu.com/product/3730>

Name: Pololu High-Power Stepper Motor Driver 36v4		Item number: 3730
Drawing date: 23 July 2019	Dev code: md38a	 © 2019 Pololu Corporation
Units: mm [mil]	Material: mixed	